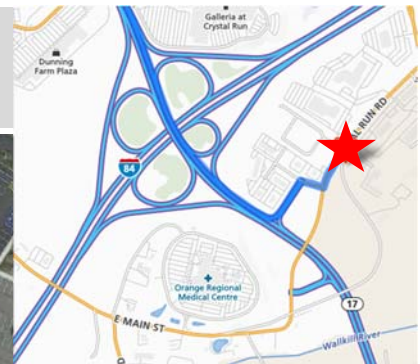




Westage Pavilion

75 Crystal Run Road, Middletown, NY 10941

Class "A" Medical Office Space
Available for Lease Immediately!



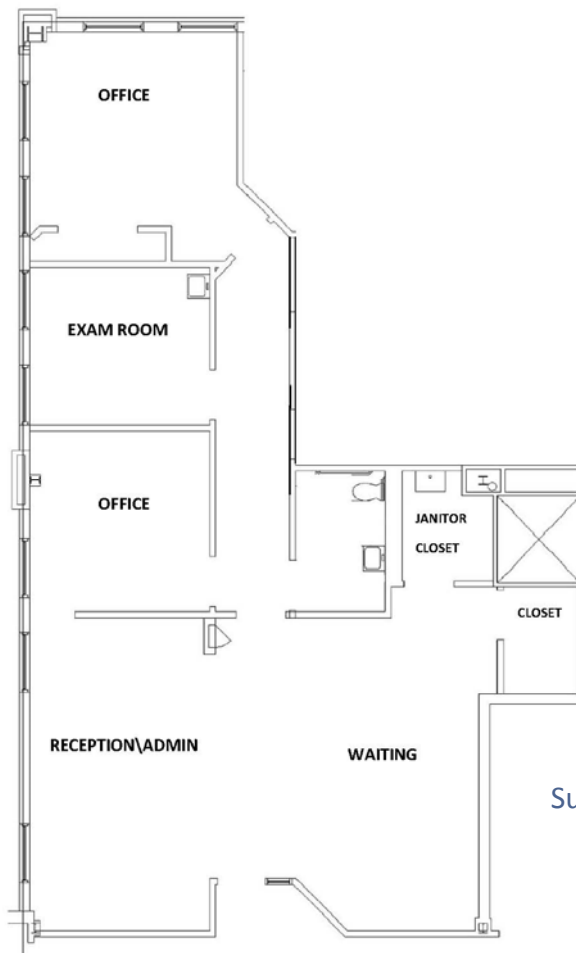
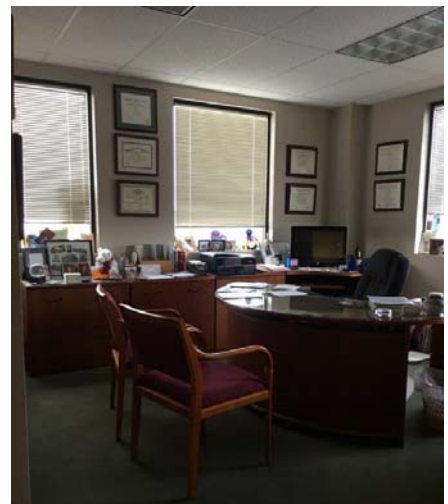
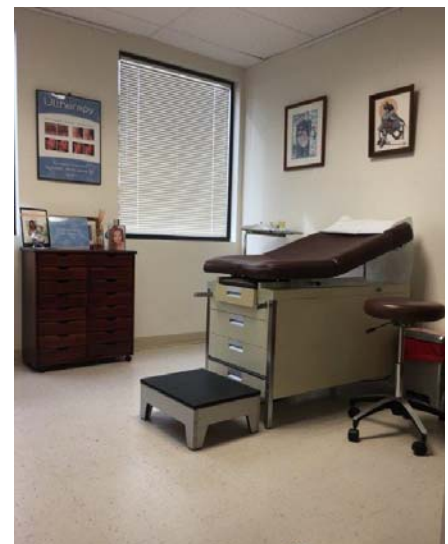
Westage Management, LLC
200 Westage Business Center Drive, Suite 120
Fishkill, NY

Phone: 845-897-3800
E-mail: info@westage.com
www.westage.com

Westage Pavilion

75 CRYSTAL RUN ROAD

- 1,621 Rentable SQ FT
- Professionally Managed Property
- 1.2 Miles from Orange Regional Medical Center
- Ample parking
- Tenancies: Otolaryngology, Sleep Lab, Urgent Care, Ophthalmology, Wound Care, Pediatric Dentistry, Behavioral Health, Ambulatory Surgery Center



Suite 230